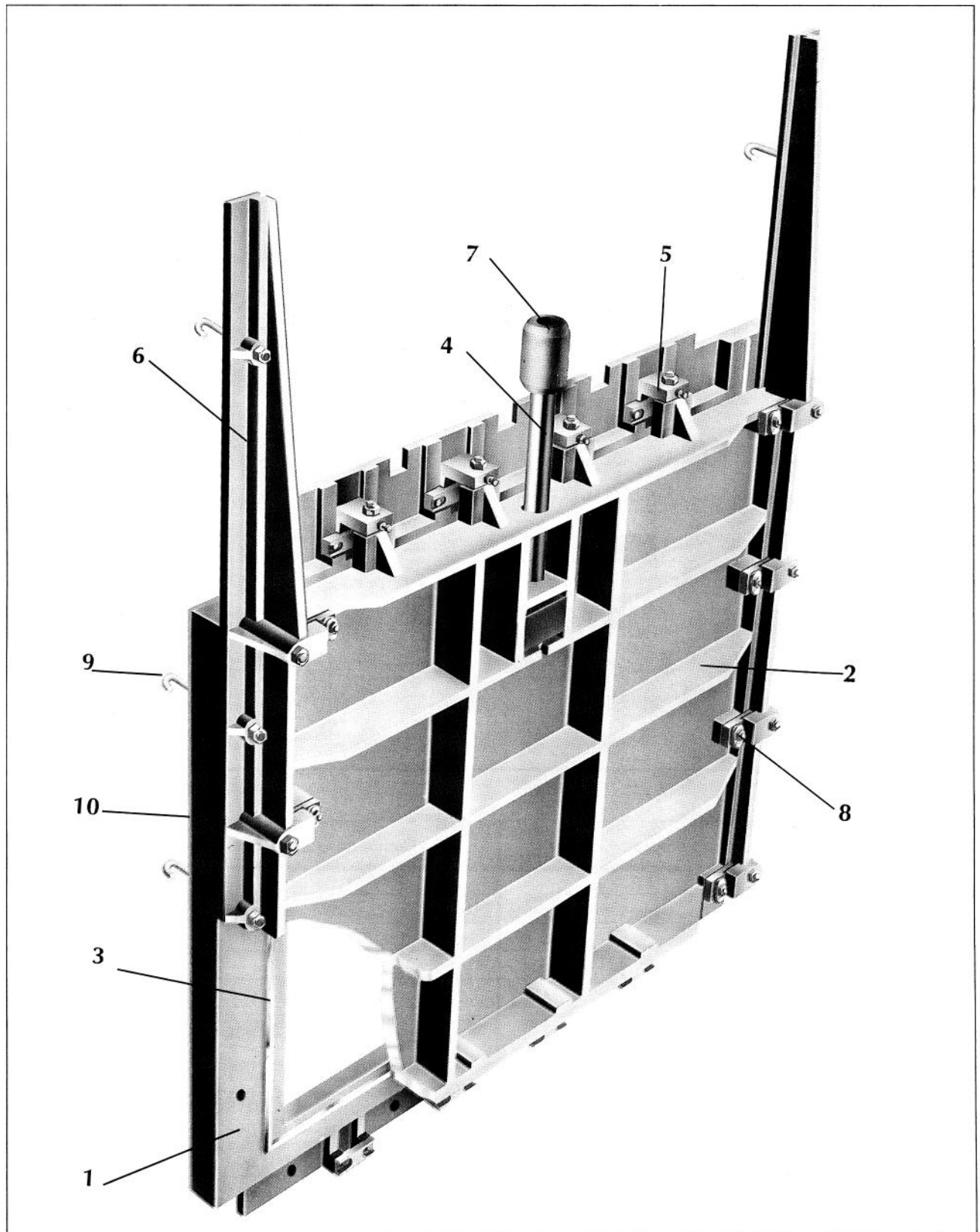


Comportas com Sentido Duplo de Fluxo

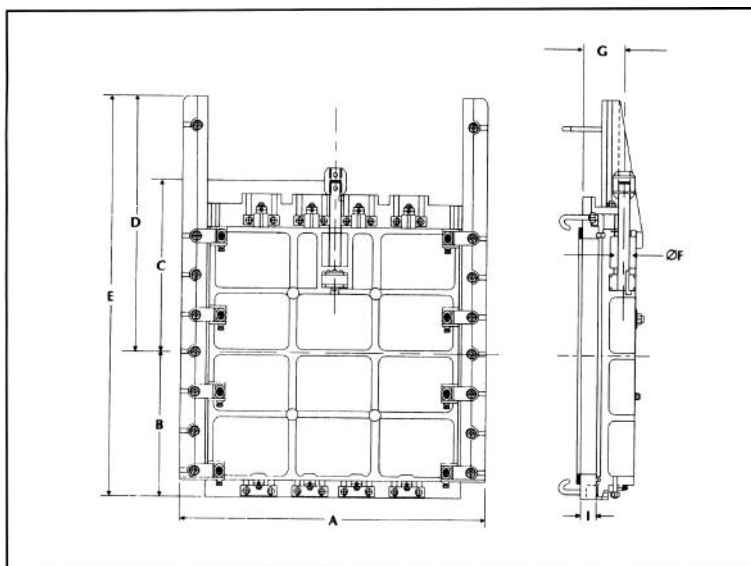


Comportas com Sentido Duplo de Fluxo

Características Construtivas

Nº	Componentes	Material
1	Telar	Ferro dúctil NBR 6916 Classe 42012
2	Tampa	Ferro dúctil NBR 6916 Classe 42012
3	Sede	Aço Inox AISI 304
4	Haste	Aço Inox AISI 304
5	Cunhas	Bronze ASTM B 147 liga 8 A
6	Guias	Ferro dúctil NBR 6916 Classe 42012
7	Luva	Ferro dúctil NBR 6916 Classe 42012
8	Parafusos	Aço Inox AISI 304
9	Chumbadores	Aço Inox AISI 304
10	Junta	Borracha

Dimensões e Massas

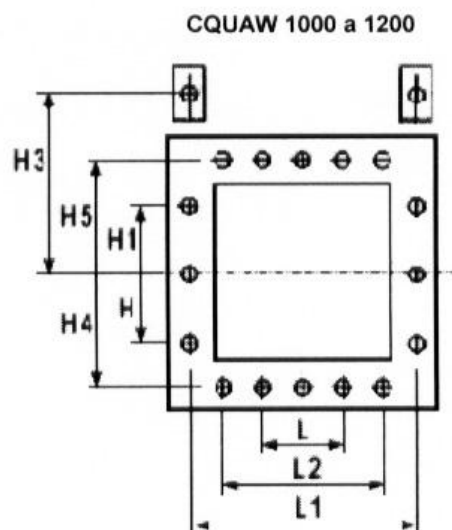
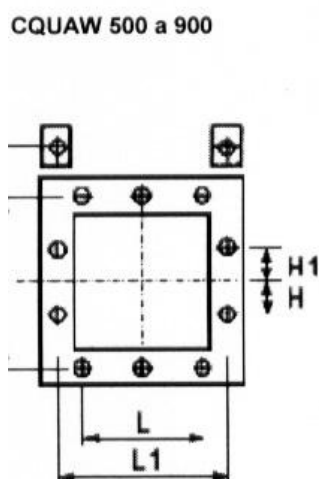
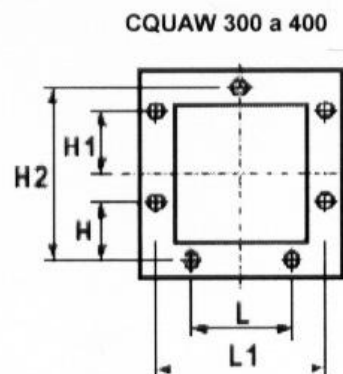
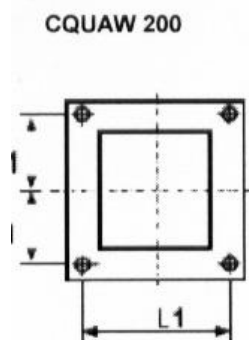


Referências

Circular	Quadrada
CCIAW	CQUAW

\varnothing ou \square	A	B	C	D	E	\varnothing F	G	I	Massa	
	mm	mm	mm	mm	mm	mm	mm	mm	CQU Kg	CCI Kg
200	381	171	270	350	521	1 1/8	106	55	100	110
300	480	221	350	400	621	1 1/8	106	55	150	170
400	620	300	460	578	878	1 1/8	110	55	195	225
500	728	354	510	649	1003	1 1/8	112	60	280	310
600	828	404	600	749	1203	1 3/4	127	60	350	460
700	928	454	682	850	1304	1 3/4	127	86	550	630
800	1144	546	732	944	1490	1 3/4	176	86	810	970
900	1244	596	750	1044	1640	2	176	86	1050	1300
1000	1354	635	800	1199	1834	2	176	86	1154	1385

Comportas com Sentido Duplo de Fluxo Gabarito de Furação para Chumbadores



Ø ou ∇	H	H1	H2	H3	H4	H5	L	L1	L2
	mm	mm	mm	mm	mm	mm	mm	mm	mm
200	150	380						280	
300	185	160	550				200	450	
400	221	225	550				300	550	
500	129	117	628				406	648	
600	154	142	748				506	748	
700	178	178	916	712			588	882	
800	203	203	1016	812			688	1004	
900	228	228	1016	962			788	1104	
1000	333	333		952	593	606	450	1214	900
1200	400	400		1053	693	706	510	1414	1050